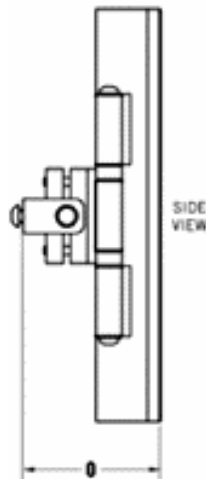


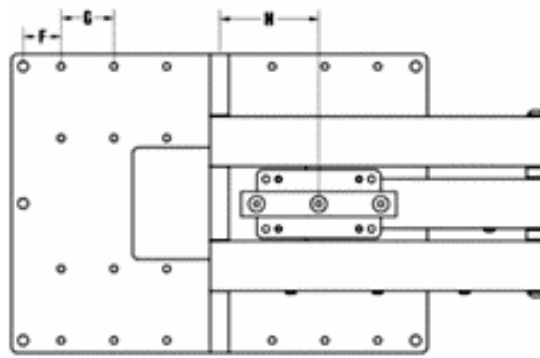
The ProMounts cantilever mounts are stunning pieces of engineering, and are the most flexible mounts for flat panel displays. The cantilever mounts offer maximum adjustability, including horizontal extension, 180° of lateral rotation, as well as full swivel and tilt capabilities. More than just mounting hardware, these cantilever mounts have a tactile quality that enhances the high technology aspects of any flat panel installation.

KEY FEATURES:

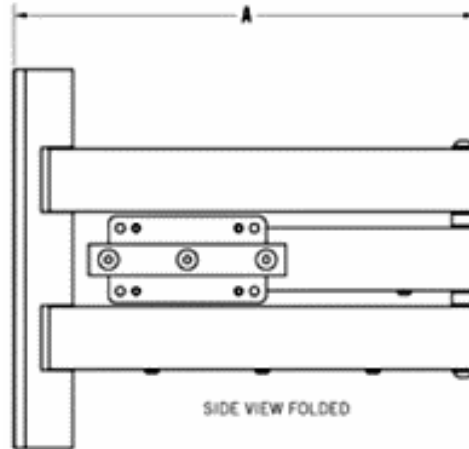
- 150-lb. maximum
- Cantilever arm mount for plasma panels
- Allows maximum flexibility for installing and viewing your plasma display
- Arm allows extension and 180° lateral rotation for viewing from multiple locations
- Allows tilt and swivel for optimum viewing
- Durable powder coat finish
- Available in Grey or Black

IMAGES





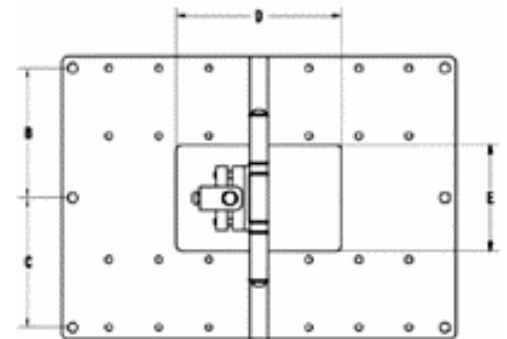
FRONT VIEW FOLDED



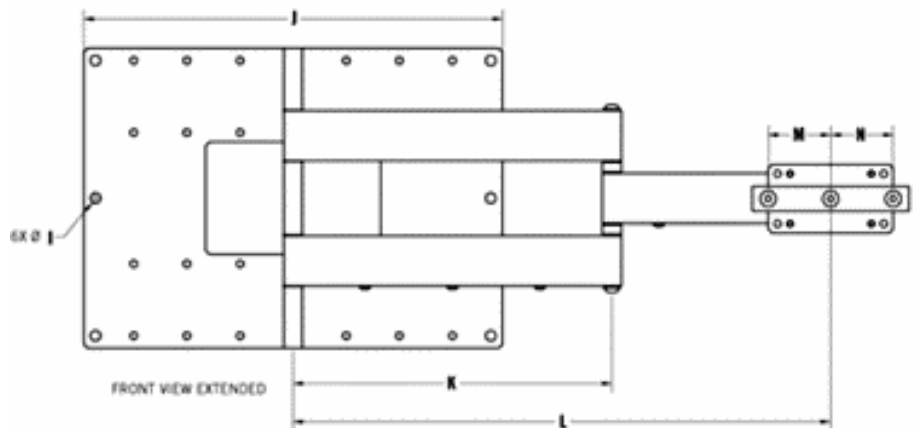
SIDE VIEW FOLDED

DIMENSIONS

A	14.60"	370.84 mm
B	5.50"	139.70 mm
C	5.50"	139.70 mm
D	7.00"	177.80 mm
E	4.50"	114.30 mm
F	1.53"	38.86 mm
G	2.13"	54.10 mm
H	4.00"	101.60 mm
I	0.41"	10.41 mm
J	16.75"	425.45 mm
K	12.75"	323.85 mm
L	22.00"	558.80 mm
M	2.50"	63.50 mm
N	2.50"	63.50 mm
O	3.97"	100.83 mm
P	12.00"	304.80 mm
Q	0.38"	9.65 mm
R	25.50"	647.70 mm
S	8.75"	222.25 mm



FRONT VIEW PROFILE



FRONT VIEW EXTENDED

