

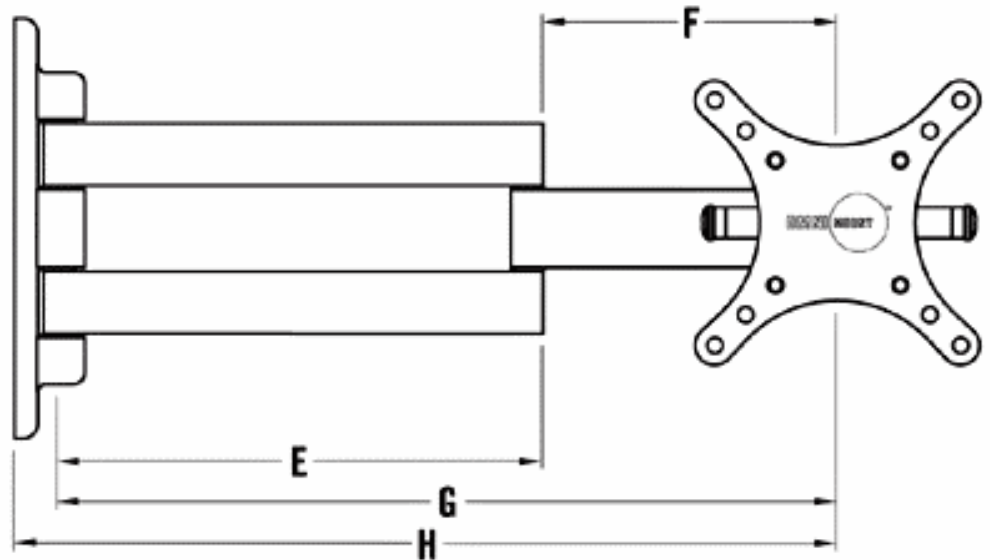
The ProMounts cantilever mounts are stunning pieces of engineering, and are the most flexible mounts for flat panel displays. The cantilever mounts offer maximum adjustability, including horizontal extension, 180° of lateral rotation, as well as full swivel and tilt capabilities. More than just mounting hardware, these cantilever mounts have a tactile quality that enhances the high technology aspects of any flat panel installation.



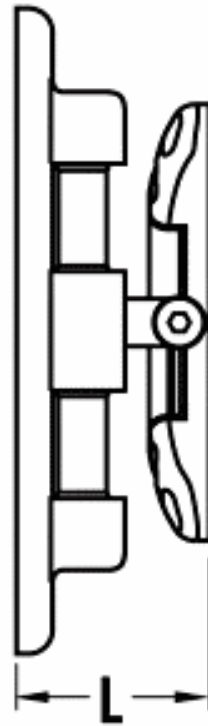
KEY FEATURES:

- 30 lb. maximum weight capacity
- VESA 75/100 compliant
- Cantilever arm mount for LCD panels
- Allows maximum flexibility for installing and viewing LCD displays
- Cantilever arm provides full extension and 180° of lateral rotation for viewing from multiple locations
- Nesting arm design allows display to be folded parallel to wall
- Provides full tilt and swivel capabilities for optimum viewing
- Durable grey powder coat finish
- Single stud mounting

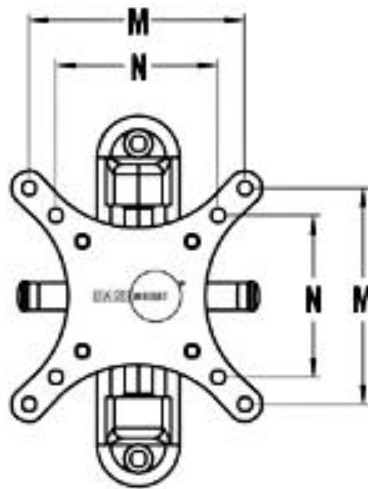
IMAGES



**SIDE VIEW EXTENDED
(SCREEN PLATE TURNED)**



SIDE VIEW
(FOLDED)



FRONT VIEW
(EXTENDED)

DIMENSIONS

A	1.50"	38.10 mm
B	6.75"	171.45 mm
C	8.53"	216.59 mm
D	3.38"	85.73 mm
E	7.77"	197.36 mm
F	4.71"	119.74 mm
G	12.50"	317.5 mm
H	13.17"	334.52 mm
I	2.62"	66.55 mm
J	4.55"	115.57 mm
K	XXX"	XXX mm
L	1.65"	41.91 mm
M	3.94"	100.08 mm
N	2.95"	74.93 mm

HARDWARE KIT

Qty	Description
4	Phillips screws M4 x 8mm
4	Phillips screws M5 x 8mm
4	Phillips screws M4 x 12mm
4	Phillips screws M5 x 12mm
1	Allen wrench 3/16 x 4 1/2"
1	Allen wrench 5/32 x 4 1/2"
2	Phillips wood screws #12 x 2 1/2"

